



LEG 35 6.2 MILES/MODERATE

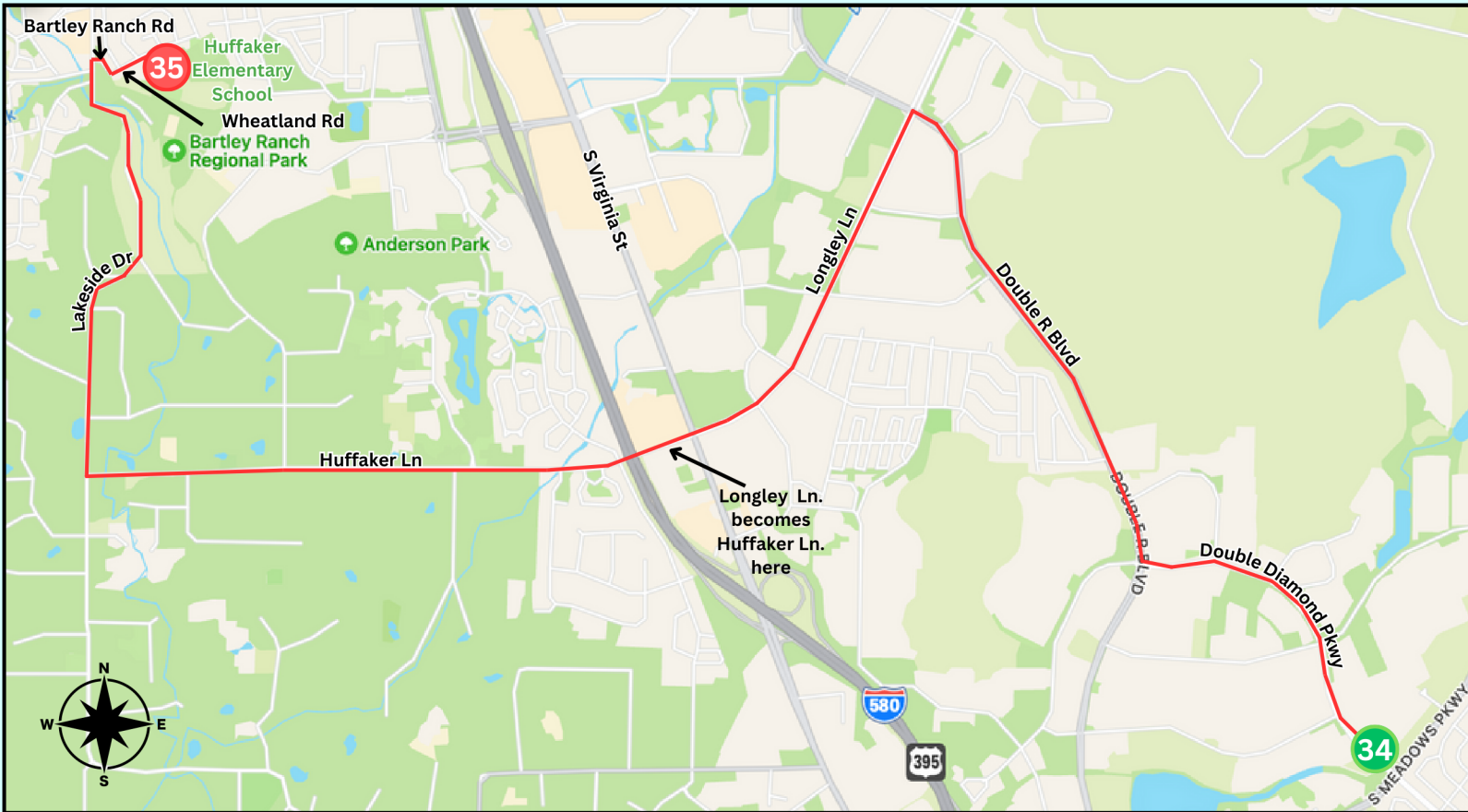
XP 34 GPS: Parkway Athletic Club

9400 Double Diamond Pkwy, Reno, NV 89521



XP 35 GPS: Huffaker Elementary School

980 Wheatland Rd, Reno, NV 89511



Leg Description

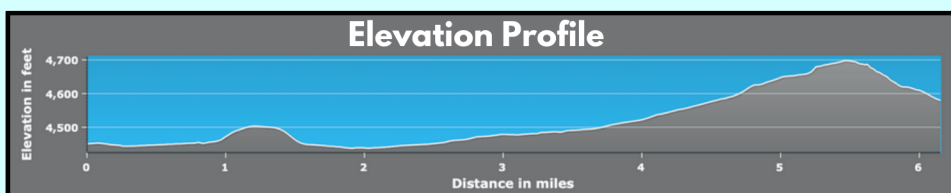
This leg travels through south Reno, second to last leg of the relay! Soak up the beautiful views on Windy Hill towards the end of the leg.

Runner Directions

1. Continue north on Double Diamond Parkway running WITH traffic for 0.8 miles.
2. Turn right on Double R Blvd., crossing the intersection there and running AGAINST traffic for about 1.0 miles.
3. Turn left on Longley Ln. and run AGAINST traffic for about 1.0 miles to South Virginia St.
4. At that busy intersection, CAREFULLY CROSS; Longley Ln then becomes Huffaker Ln.
5. Continue straight running due west on Huffaker for about 1.5 miles to its end.
6. Turn right on Lakeside Dr., crossing the intersection there and running AGAINST traffic up, around and down Windy Hill for about 1.3 miles.
7. Turn right on Bartley Ranch Rd, CAREFULLY CROSSING Lakeside Dr. using the crosswalk and running about 0.1 miles.
8. Turn left on Wheatland Rd for about 0.1 miles to the exchange in front of Huffaker Elementary School.

Van Directions

For parking at XP 35, continue past the exchange and turn right into the elementary school parking lot.



Total Elevation Gain/Loss

Total Gain 313 ft

Total Loss 182 ft