



LEG 8 4 MILES/MODERATE

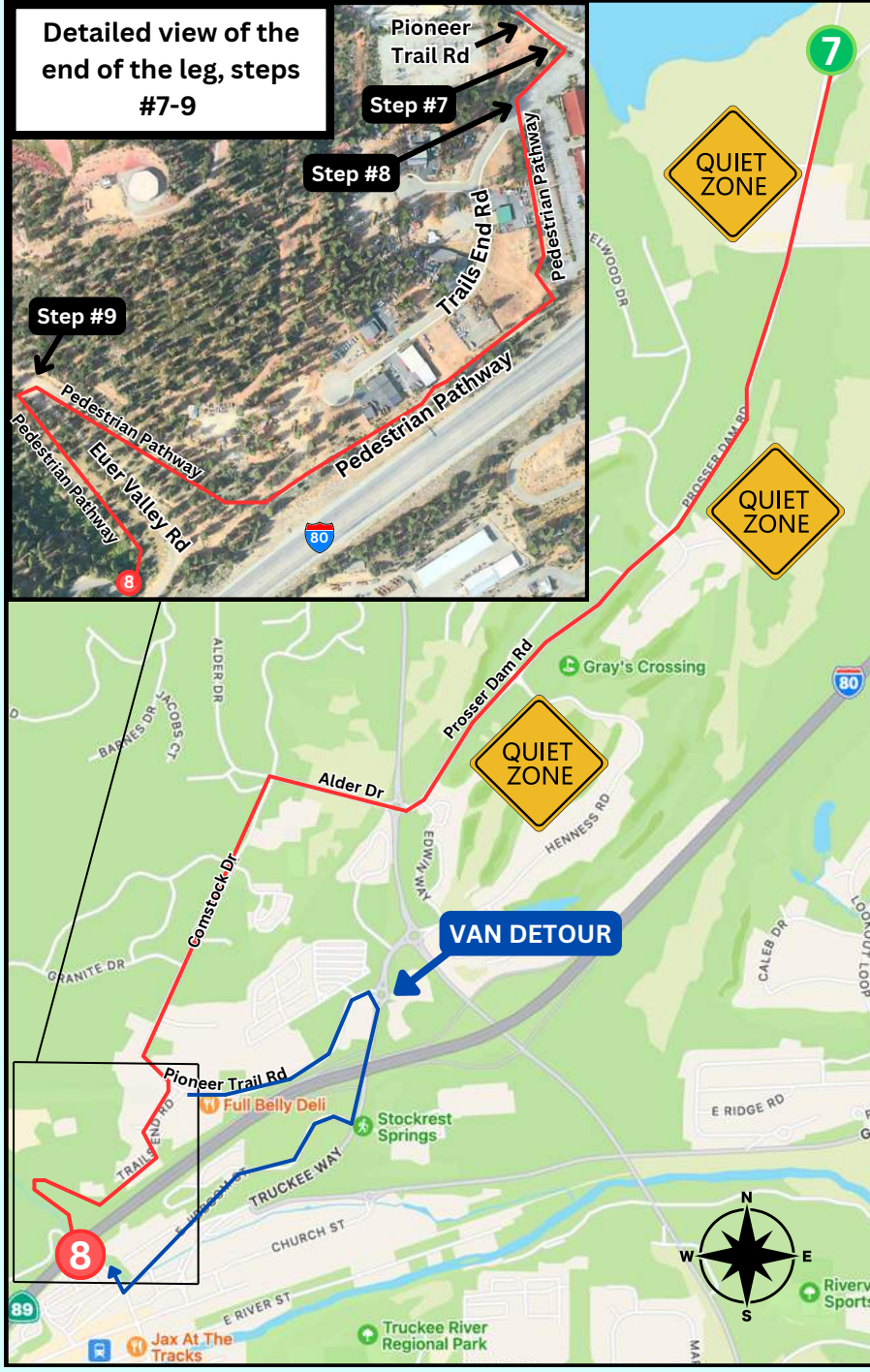
XP 7 GPS: Prosser Dam Rd

39.369196, -120.154631



XP 8 GPS: Old Town Truckee

Intersection of Bridge St and Euer Valley Rd



Leg Description

The neighborhood at the beginning of this leg is a quiet zone. The leg then navigates a tricky pedestrian path through Truckee. The route is simple, but study your map and keep a sharp eye out for course marking, there will be lots of signs.

Runner Directions

1. Continue on Prosser Dam Road, which is paved, for 0.9 miles. This is narrow so runners and van drivers need to be extra careful. Run WITH traffic.
2. Access the paved pedestrian path on the right side and continue for 0.9 miles.
3. At the junction with CA State Route 89, carefully cross at the roundabout.
4. Continue straight due west on Alder Drive for 0.3 miles.
5. Turn left on Comstock for about 1 mile.
6. Turn left on Pioneer Trail Rd and go only 0.1 miles.
7. Turn right on Trails End Rd, which is partially a parking lot for some businesses there, and run about 75 yards.
8. Turn left onto the pedestrian pathway. Follow it south towards the freeway and then parallel to the freeway, total of about 0.5 miles.
9. Cross over Euer Valley Road, which is the paved road that you reach. Follow the path down a short distance and turn hard left onto the next pedestrian path you connect with. Continue down the hill for about 0.25 miles to the exchange.

Van Directions

Where the runner turns right onto Trails End Rd (step 7), vans need to continue east on Pioneer Trail Rd. Then turn right on Donner Pass Rd. Cross over the freeway and go down the hill. Turn right on Church St, then right again on Bridge St. At the intersection of Bridge and Jibboom, continue on Bridge passing under the freeway and to the exchange. All vans should park beyond the exchange on Bridge St. To park here, continue up the hill, make a u-turn at the end, and then park on the right side of the street facing downhill toward the exchange.

Key Rules

Vans - When driving on Prosser Dam Rd, in route to and leaving XP 7, **VANS MUST REMAIN AS QUIET AS POSSIBLE**. This is a sensitive neighborhood. No honking, speeding, or cheering while on this brief section of the course. Teams breaking this rule will be removed from the event.



Total Elevation Gain/Loss

Total Gain 231 ft
Total Loss 130 ft